



FC1000

Safety aspirate cabinet



| CODE | DESCRIPTION | UDI-DI | BASIC UDI |
|------------|--|----------------|----------------------|
| 50-100-601 | Safety aspirate cabinet with glass doors | 08034120271646 | 080341202W02070304BR |



In vitro diagnostic-medical device
IVD **Class A**, Reg. UE 2017/746



Manufacturer: Bio-Optica Milano S.p.A.

Release date: 16/05/2022
Rev. 001

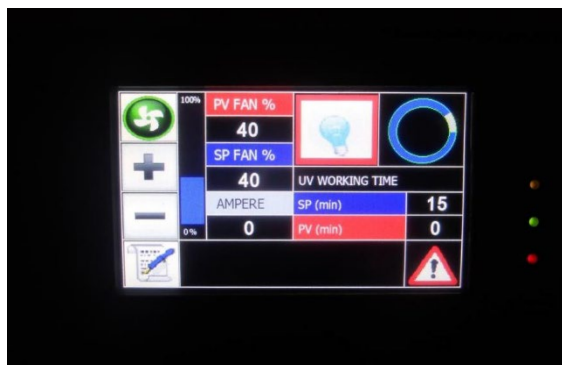
Safety aspirate cabinet designed to contain histological samples in formalin or chemicals (acids and bases) depending on the type of filter installed.

STRUCTURAL FEATURES

- Electrozincated sheet steel structure, doors and shelves, thickness 12/10, painted with grey (RAL 7035) antiacid epoxy powder.
- Double door in 6/7 mm accident prevention stratified glass provided with closing on 3 points, lock and 180° opening in order to make the shelves moving easier. Yellow danger signs in conformity with the regulations in force.
- N. 3 extractable shelves with adjustable height, tray shaped in order to contain incidental liquid leaks. Capacity 50 Kg.
- N. 1 AISI 304 stainless steel bottom tray, thickness 12/10, for the collection of incidental liquid leaks.
- Palletized base.
- N. 4 antiantistatic and antislip adjustable feet allow to get a perfect horizontal position.
- Value of aspiration 0,50 m/s.
- Visual and acoustic alarm for open door. The ventilation goes automatically at maximum power in order to safeguard the safety of the operator.
- Flow 300 m³/h.

CONTROL PANEL

Touchscreen monitor for the control and visualization of all the functions.



MAIN FUNCTIONS

- General ignition switch.
- Emergency switch.
- Start/stop switch for aspiration working.
- Germicidal U.V. lamp switch (only with optional 50-600-051).
- Fan speed regulation with graphic bar of percentage visualization.
- Key fast adjustment of fan speed measured in percentage.
- Visual and acoustic alarm in case of filters saturation.
- Visual and acoustic alarm for open door.
- Visual and acoustic alarm in case of exhausted uv lamp.
- Acoustic alarms silencing key.

Release date: 16/05/2022

Rev. 001

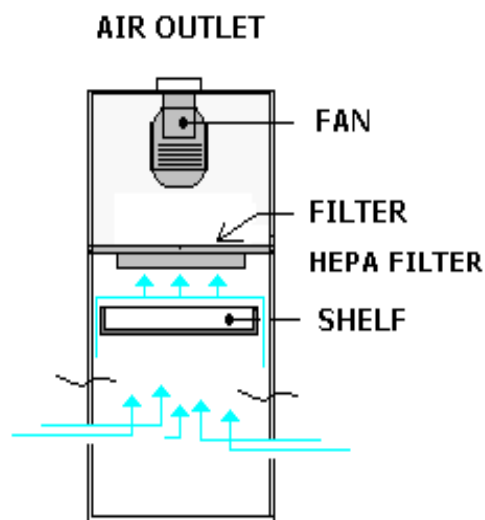
- Filter's change planning.
- U.V. lamp ignition and self-switching off planning (only with optional 50-600-051).

ASPIRATION / FILTRATION SYSTEM

- N. 1 preinstalled anti-spark electrofan with adjustable speed. Protection IP 55. 60 mm H₂O prevalence in water column.
- N. 1 filter for formalin 50-F001 or for solvents 50-F002 (not included in the equipment), whose replacement happens from the inside simply and cleanly.
- The cabinet is provided with Ø 120 mm collector on its upper side in order to allow the connection to the hospital's centralized canalization system.
- The fan placed on the upper part allows the fumes aspiration from the bottom toward the top (see the diagram below). The air is purified passing through the filter placed under the fan and can be discharged in this way:

- 1) FAN → FILTER → DISCHARGE OUTSIDE THROUGH A NON-ASPIRATED CANALIZATION SYSTEM (draining pipe not longer than 3 metres, with diameter equal to 120 mm).
- 2) FAN → FILTER → DISCHARGE OUTSIDE THROUGH AN ASPIRATED CANALIZATION SYSTEM.

ASPIRATION SYSTEM DIAGRAM



Release date: 16/05/2022
Rev. 001

Technical data

| | | |
|-------------------------|---------------------------------|--|
| Dimension and weight | Dimension (W x D x H) | 1000 x 550 x 1975 mm |
| | Internal dimensions (W x D x H) | 980 x 490 x 1580 mm |
| | Weight | ca. 105 Kg |
| | Volume | ca. 180 liters |
| Electrical data | Voltage | 230 V |
| | Frequency | 50 ÷ 60 Hz |
| | Power consumption | 0,09 kW |
| Other connections | Hydraulic connections | Not applicable |
| | Emergency power supply | Not applicable |
| | Fumes discharge: | The cabinet is provided with Ø 120 mm collector on its upper side in order to allow the connection to the hospital's centralized canalization system |
| Warning and precautions | Product classification | The product is intended for professional laboratory use for healthcare professionals. |
| | Remarks | In the event of a serious accident, please immediately inform Bio-Optica Milano S.p.A. and competent authorities |

Standard components included in the equipment

| CODE | DESCRIPTION | Q.TY |
|------------|---|------|
| 50-600-054 | FAN | 1 |
| 50-600-061 | 1000 MM EXTRACTABLE SHELF DIMENSIONS 970X455 MM | 3 |
| 50-600-064 | 1000 MM STAINLESS STEEL BOTTOM TRAY | 1 |
| 50-600-066 | SHELF SUPPORT | 6 |

Filters not included in the equipment

| CODE | DESCRIPTION | Q.TY |
|---------|---------------------|------|
| 50-F001 | FILTER FOR FORMALIN | 1 |
| 50-F002 | FILTER FOR SOLVENTS | 1 |

Optional accessories*

| CODE | DESCRIPTION | Q.TY |
|------------|-------------|------|
| 50-600-051 | UV LAMP | - |
| 50-F006 | HEPA FILTER | - |

(*) These accessories can be installed only at the time of production, not afterwards.

| REVISION | DESCRIPTION | DATE |
|----------|--------------------------------------|------------|
| 001 | UE Regulation 2017/746 – IVDR update | 16/05/2022 |

Release date: 16/05/2022
Rev. 001